

Portfolio



Exotica Crafts

Hotel Supply

About Us



About us

Exotica Crafts had its humble beginnings in 2000, producing candles and gradually expanding towards folders, amenity boxes, and much more. Today our team consists of 18 hand selected craftsmen and women.

Our products range from candles and soaps through to folders, amenity trays and dust bins. Our selection of materials and techniques have through the years developed alongside our range of products. We work with leather, PVC, woods, plastics, natural fibers, traditional hand woven materials through to glass and metals.

Our factory and showroom is located in **Phuket**, we produce locally and have great connections to suppliers throughout Thailand, enabling us to produce a **wide variety of products**. We pride ourselves on our **flexibility** and **speed**. Our clients range from hotels, spas, restaurants and other small businesses mainly in south Thailand as well as some international clients in Malaysia and Europe.

About this catalogue

This catalogue is a **collection** of just some of our **products and services**, our intention is to present you with our products to **inspire ideas** for your business.

The catalogue contains many products of various styles, techniques, systems and material combinations, please **view the entire catalogue** to see all possibilities.

Text boxes describe the products **material, dimensions, system, logo** and any **further possibilities** and personalization.

Navigation. On Contents page, click on the desired **category** to go page to page. Click 'Exotica Crafts' (top of page) to return to Contents page. (*web version only*)

View chapter **Materials** (pages 50-57) for material reference and the possible personalisation and intergration of your logo or design.

Please note that a much large selection of material is available viewing at our showroom.

Contents

Folders	
Showcase	4-17
Systems	18-19
Boxes	
Wood	20-23
Amenity Boxes	24-25
Others	26-27
Tissue	28-29
Trays	30-31
F&B	
Wine Bag	32-33
Newspaper / Ice box	34-35
Bags	
Small bags, Beach bags, Gift bags	36-41
House Keeping	
In-room slippers	42-43
Signage	44-45
Dust Bins	46-47
Laundry bags	48-49
Gift shop & Accessories	50-51
Materials & Logo	
Logo and Laser engraving	52-53
Woods, Woodstains & Formica	54-55
PVC	56-57
Canvas Natural Fiber & Others	58-59
Phuket Warm Glass	60-65
Ceramics of Phuket	66-71
Phuket Soap	72-77
Contact us	77-79

Folders : Showcase

Folders for the F&B (food and drinks menu), hotel directories, front office, bill folders and spa menus. Folders can be tailored to your required dimensions (A4, B5,.. etc).

Material of your choice: formica, wood, natural fibers, fabrics, canvas and PVC. (*Materials pages 54-59 for reference*)

Logo can be emboss / deboss logo, silkscreen, fabric print, laser engrave.
(*'Logo and Laser Engraving' pages 52-53*)

Organizing system: Exotica standard three / two hole binding, ring binders, plastic sleeve, top & bottom framing or corner framing. (*'Systems' pages 18-19*)



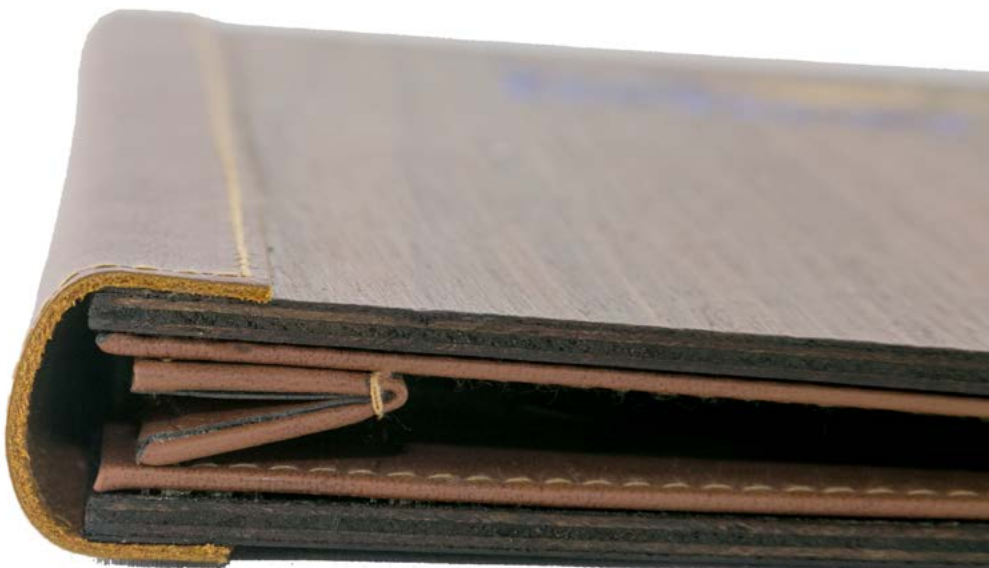
Folders : Formica



Material: *Exterior:* Formica Laminate Wood EWY 3167EV, *binding:* Leather, *interior:* PVC leather imitate

System: Exotica standard two hole binding (*'Systems' pages 18-19*)

Personalization: Laser engraved and color embossed, materials can be combined
(*Materials pages 54-59 for reference*)



Folders : PVC Drinks



Material: *Exterior* PVC SN403 37,
interior: Chinese silk

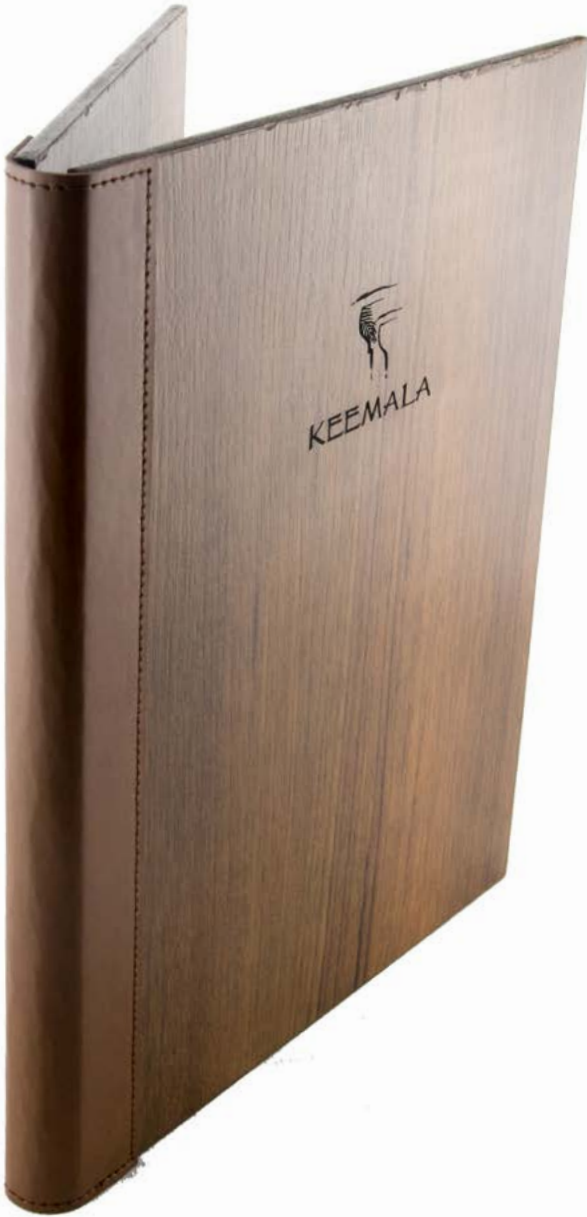
System: Corner framing (ribbon)
(*'Systems' pages 18-19*)

Logo: Wood logo laser engraved
(*'Logo and Laser Engraving' pages 52-53*)

Logo can also be laser engrave directly
onto *Exterior* PVC. More inserts (pages) can be
added. Any dimension possible.



Folders : Formica 2



Material: Formica

Binding: Bamboo

System: String binding with bamboo cover

Logo: Laser engraved on cover

Durable elegant and slim design with a simple and natural binding system. Choose formica and binding system of your choice.

(See 'Materials' and 'Folder systems')



Folders : Artificial Reed



Material: *Exterior:* PVC leather imitate & artificial reed.
Interior: PVC leather imitate.

System: Exotica Binding
(‘Systems’ pages 18-19)

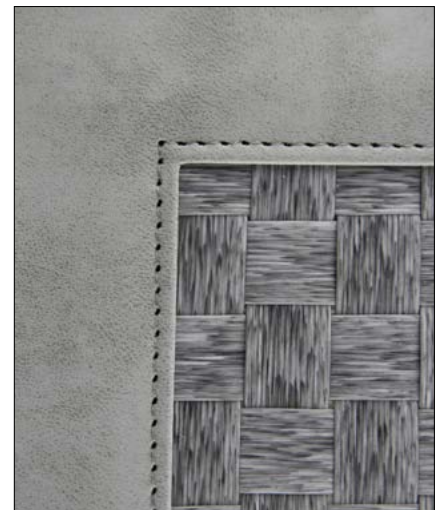
Logo can be laser engraved on PVC or attached as emboss/deboss metal logo.
(‘Logo and Laser Engraving’ pages 52-57)



PVC: Brown, reed: light brown



PVC: Light brown, reed: Brown



PVC: Grey, reed: Grey

Folders : Chino

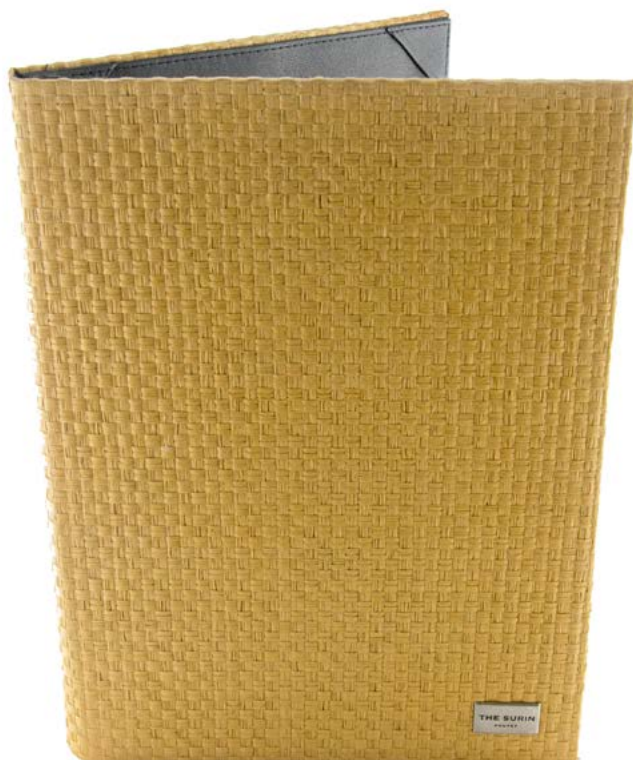


Material: *Exterior:* PVC
System: String binding
Logo: Laser engraved

Light and elegant pool side or restaurant menu,
Organic feel with simple binding system, various
materials can be selected
(*Materials pages 54-59 for reference*)



Folders : Natural Menu

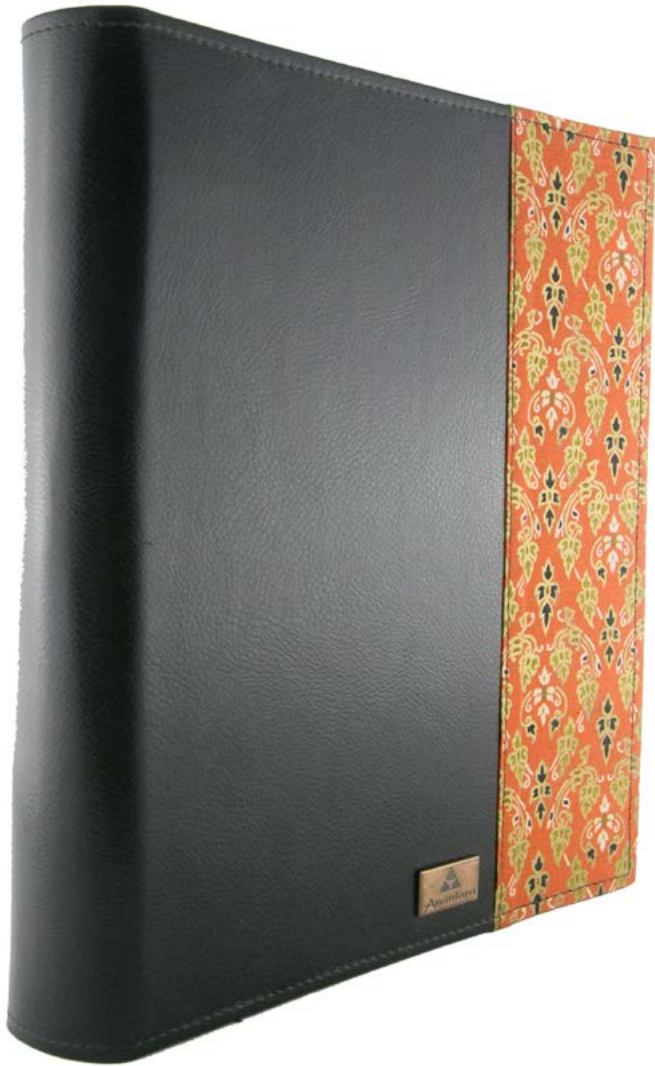


Material: *Exterior:* Natural fiber #1
Interior: PVC SN403 3

System: Corner framing
Logo: Embossed stainless steel
Your logo can also be engraved on fiber
(*see 'Beatroot' page 16 for example*)

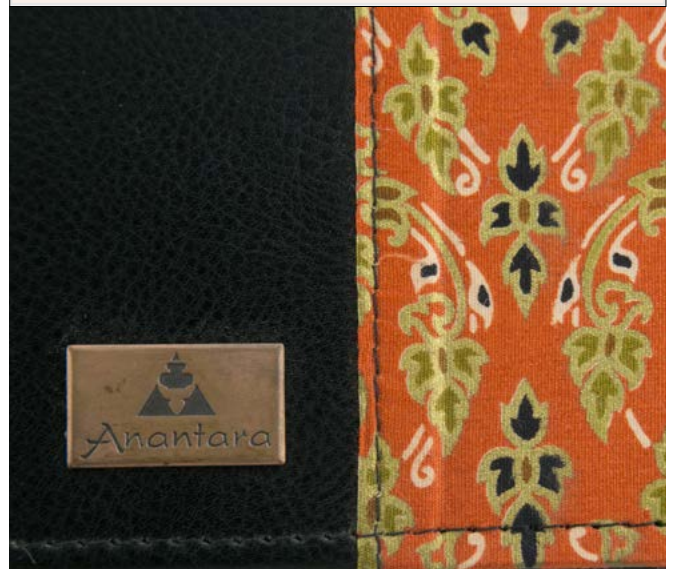


Folders : In-Room Directory



Material: *Exterior:* Black leather & batik
Interior: PVC SN403 3
System: Standard three ring binding
Personalization: Bronze embossed logo

Batik or fabric of your choice can be combined with any material. Logo can also be laser engraved onto batik or leather. Interior compartments can also be tailored to your requirements.



Interior compartments can be tailored to your specification.

Folders : Poolside splash resistant



Material: *Exterior:* Sunbrella
Interior: Sunbrella
System: Water proof plastic sleeve

Sunbrella is used as a **water resistant** material (for pool side or beach use)
Logo can be engraved on textile or silkscreened onto sunbrella.
Various colors available.
(visit showroom for selection)



Folders : Bamboo



Material: *Exterior:* PVC SN403 2-3 & cut bamboo.
Interior: PVC SN403 3
System: Multiple page, corner framing (ribbon)

Outer frame can be material of your choice, cut bamboo can be replaced with formica, canvas, wood or natural fiber.



Folders : Natural

Material: Natural fiber

System: Standard two hole ring binding

Logo: Copper embossed logo

Natural and organic feel with a functional binding system.
Dimensions and binding system can be tailored to your specification



Folders : In-Room Directory

Material: PVC *wood imitate*

Binding: Bamboo

System: String binding with bamboo cover

Logo: Laser engraved on cover

An elegant and durable folder with a slim design with a simple and natural binding system



Folders : Coconut



Material: *Exterior:* Coconut shell

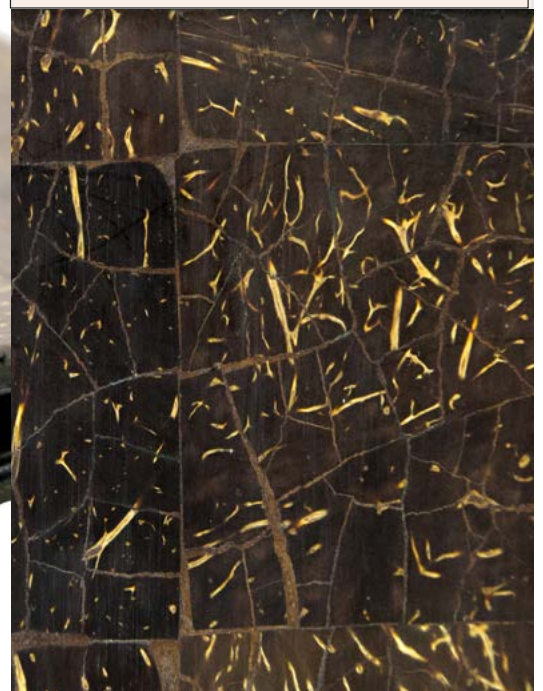
Binding: leather

Interior: PVC

System: Exotica binding

Menu cover made from real coconut shell, finished smooth and waterproof. Perfect for a natural or tropical theme.

Coconut shell can be laser engraved or a metal embossed logo embedded into the surface of the coconut shell.



Folders : Clip



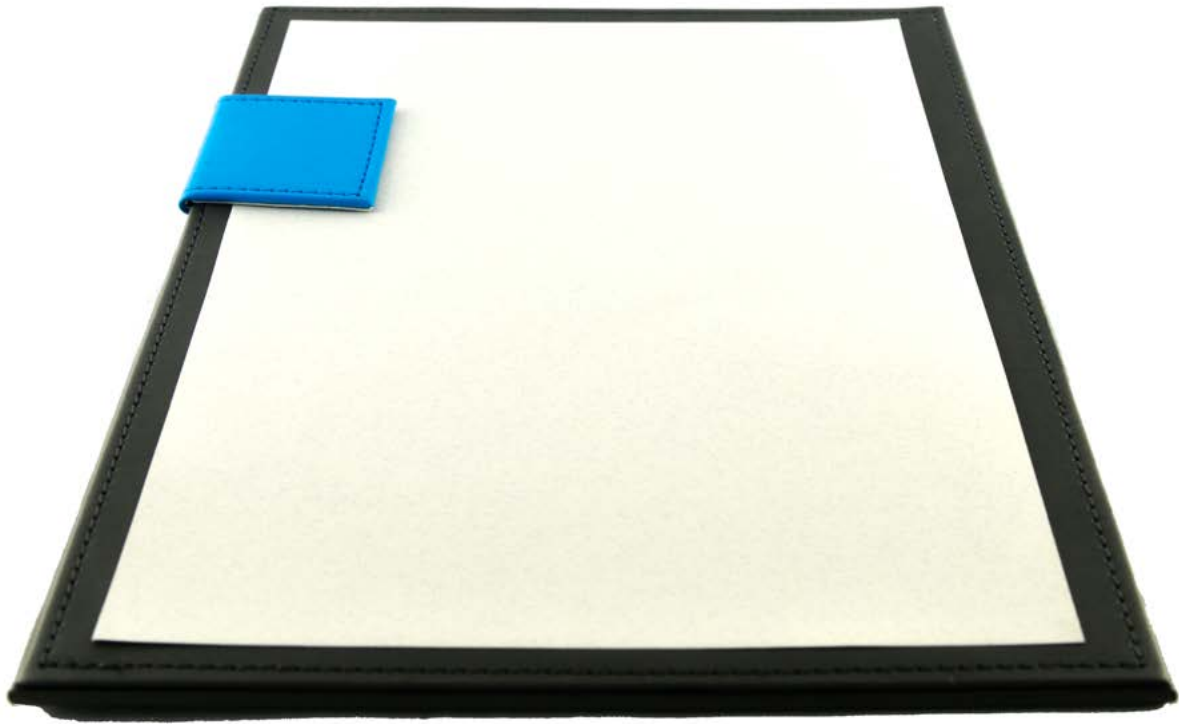
Material: *Base:* Wood C CW 05
Magnet clip: Natural fiber #1
Dimensions: A4 23 x 32cm
System: Magnet clip
Logo: Laser engraved logo

Various combinations of materials can be combined.

Logo can also be laser engraved onto wood body or on rear PVC. Clip board is backed with PVC for aesthetics.



PVC backing for aesthetics.



Side Magnet clip PVC

Material: *Base:* PVC SN403 3
Magnet clip: PVC SN403 18-58
Dimensions: For A4 23 x 32 cm

System: Magnet clip

Materials (formica, wood, canvas, pvc) of your choice can be combined as required.



Material: Wood with varnish
Dimensions: For A4 Drinks 23X32 cm
System: Standard two hole

Thick woods can also be adopted for clip boards.
Logo can be engraved onto wood board.



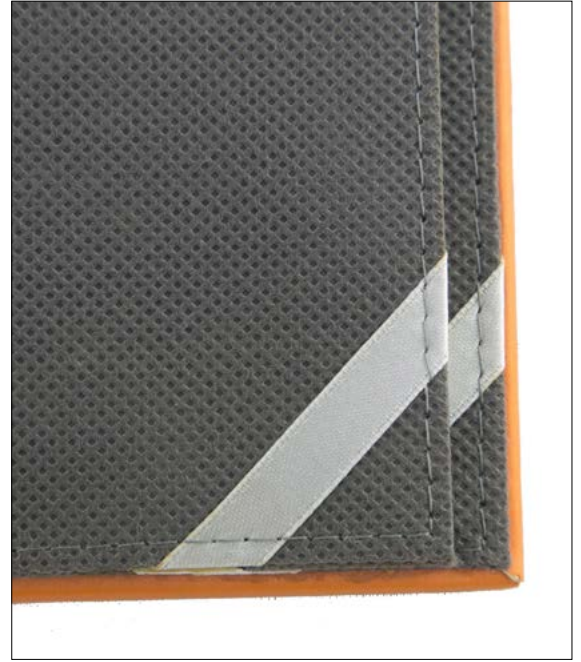
Material: Natural wood
System: String binding
Logo: Laser engraved

Natural woods can be adopted for menu covers.

Folders : Systems



Magnet clip (long)



Corner framing (ribbon)



Magnet clip (short)



Standard clip



Plastic sleeve



Top/Bottom framing



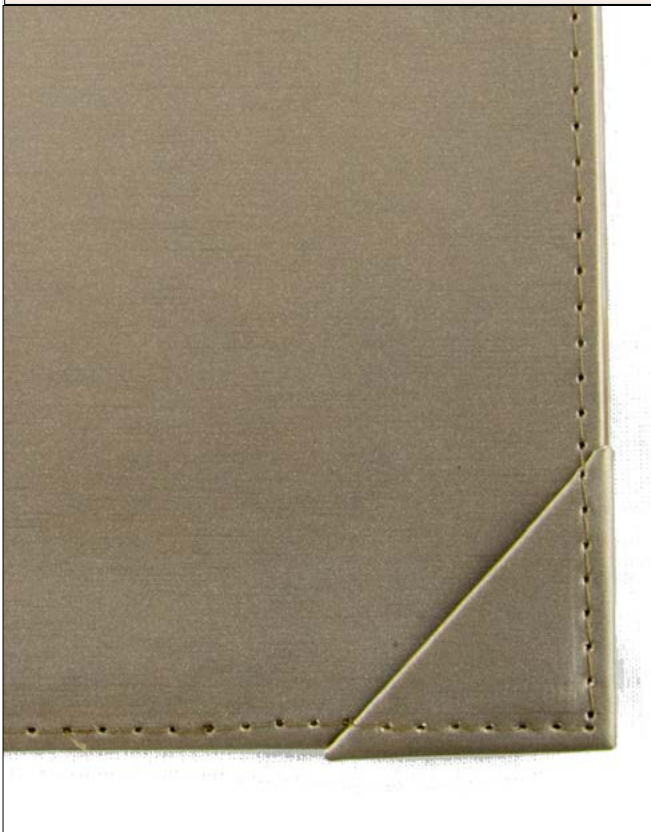
Exotica standard three / two hole system

Exotica standard three / two hole system: Folder mechanism hidden from audience while providing same functionality as an open system.

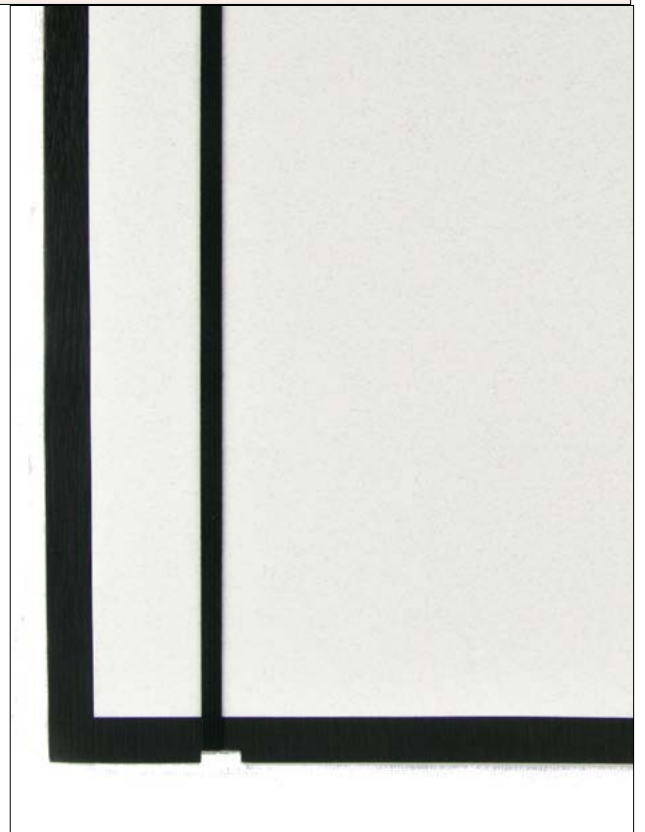
Vertical elastic strap: Elegant and sleek, perfect for 'today's special' or day menus

Corner framing (ribbon): Ease of use and not distracting to audience.

Magnet clip: Minimalistic, modern and functional, magnet clip material can also be natural fiber or canvas for a modern natural feel *see Beatroot page 16*



Corner framing



Vertical elastic strap

Boxes : Showcase

Condiment Coffee

Material: *Base: Wood Surface: Formica*

Dimensions: 40x20x15 cm

Logo: Logo or design can be laser engraved onto formica surface.

Neat and unique condiment box for coffee and tea accessories, drawers are lined with velvet for smooth opening and closing. Dimensions can be tailored to your coffee cups and accessories. Choose material of your choice: formica, natural fibers woods,..etc
(see 'materials' for reference)





Amenity Box
Material: *Base: Wood Surface: Formica*
Dimensions: 30x15x7 cm
Logo: Can be laser engraved on exterior or inside drawer
An elegant solution to organizing amenities, materials, dimensions and interior compartments can be tailored to your specification.



Bread Box
Material: *Base: Wood*
Dimensions: 25x25x35 cm
Logo: Can be laser engraved wood or acrylic.
Fresh bread, in hygienic reinforced acrylic box.
Materials, dimensions, interior compartments and color can be tailored to your specification.
(see Materials)

Boxes : Wood



Material: *Wood: Persia*
Woodstain: C S 2906
Lid: Acrylic
Dimensions: 12x12x9cm
System: Sliding lid
Logo: Laser engravement on wood body or acylic lid.

Wood and woodstain of your choice.
Logo placement can be as required (*on wooden body or on the lid*)
Dimensions can be as specified.





Salt Box

Material: Wood: Persia. Woodstain: C CW 05. Lid: Acrylic. **Dimensions:** 12x12x9cm.

System: Sliding lid. **Logo:** Laser engraved on wood body or acrylic lid.



Back hinged wood Box



Gate hinged wood box

Amenity Boxes : Wood / PVC

Material: *Body* Persia Wood

Cover: PVC

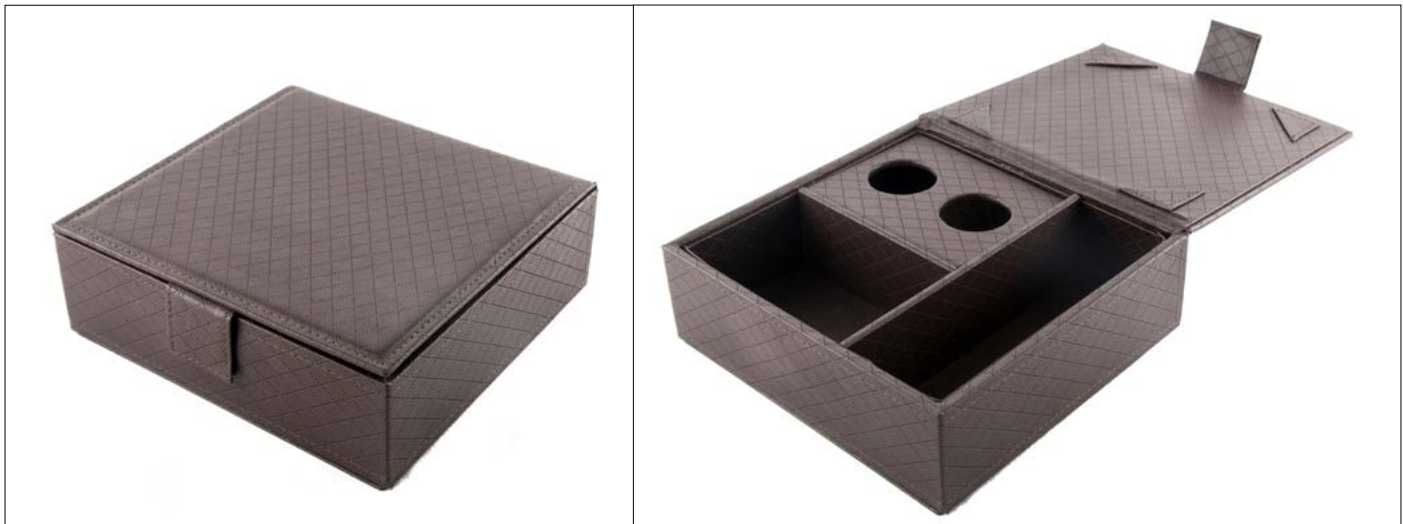
Dimensions: 6x4x18cm

System: Magnet lock

Logo can be laser engraved on PVC or wood body.

Dimensions of your requirement with a woodstain finishing of your choice. Interior fittings (*lining or cushion*) also possible.





Mini Bar Box Material: PVC, Dimensions: 17x17x7cm. System: Flip lid with magnet clip. Personalization: Laser engraved PVC or emboss/deboss logo.



Amenity box Material: PVC SN403 6 & SN403 11-79 Dimensions: 15x15x5cm. System: Flip lid with button lock. Logo: Laser engrave exterior body or on interior



Tea box
Expandable box with three levels. Present tea, chocolate or coffee.

Amenity Boxes : Others



Classic Thai amenity tray

Material: *Body:* Wood

Lining: Silk

Dimensions: 20x20x25cm

Personalization: Dimensions and sections can be tailored to your specification.

Lining of your choice (batik, sarong, canvas,..etc)



Natural fiber box



Amenity tray / box



Remote control box



Amenity box



Amenity / Accessory box : Natural fiber, poka dot, logo can be laser engraved.



PVC Amenity box: Imitate leather PVC, can be laser engraved



Accessory box: PVC & wood with elastic button



Black PVC Amenity box: flip lid.

Box : Tissue boxes

Tissue boxes for the front desk, spa, F&B or In room.

Dimensions: Cube or long,

Materials: Wood, PVC, leather, canvas, natural fibers, formica or fabric.

Logo: Laser engrave, emboss/deboss, silk screen (fabrics only)

Coconut tissue box

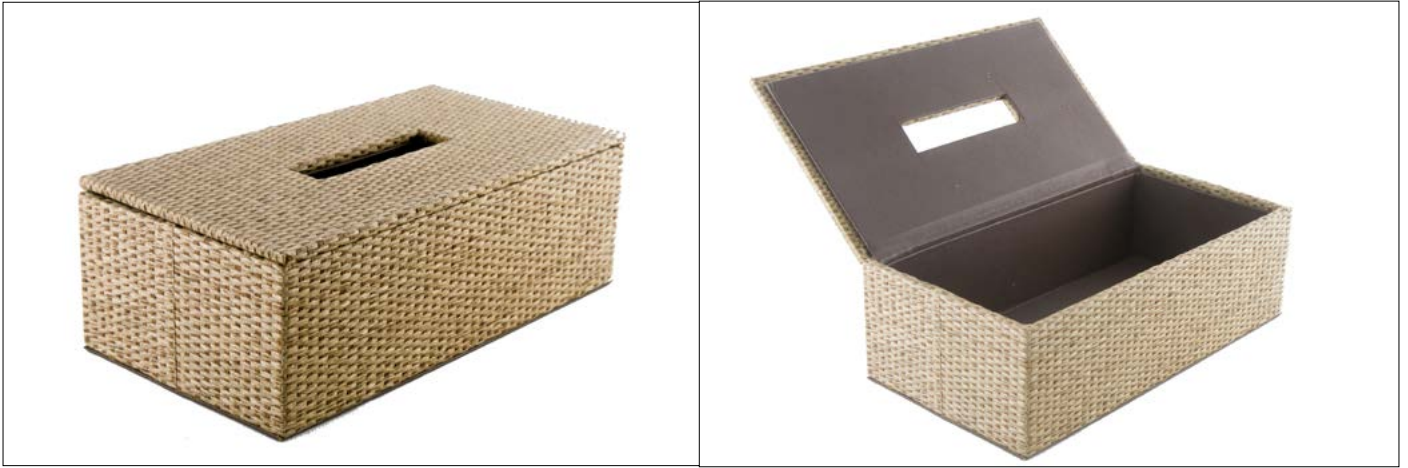
Material: Coconut shell

Dimensions: Cube *14x14x14cm*

Personalization: Laser engrave coconut.

'Long' dimension also possible





Natural fiber: Flip lid system with PVC interior.



PVC long box: with black interior



Long box with wood tray and interchangeable box



Square box with flip lid and Formica

Amenity Trays



Serving trays for F&B, front desk, amenity trays for In-room or for the Spa.

Dimensions: Any dimensions possible.

Materials: Wood, PVC, canvas, natural fibers, formica or fabric. (*'Materials' 54-59*)

Logo: Laser engrave, silkscreen (fabrics only)

Volvano tray

Material: Persia with woodstain C S 2905

Dimensions: 50x30x5cm

Personalization: Floor can be lined with material of your choice (*formica, canvas, PVC*).

Logo: Laser engrave on tray floor or side.





Any size and dimension possible



Standard matte black wood



Natural fiber boarder with PVC flooring



PVC with white stitching



PVC with white stitching (many materials available)

Drinks Holder

Bottle bags for F&B, gift sets and in room.

Dimensions: For 1 or 2 bottles

Materials: Wood, PVC, canvas, natural fibers, formica or fabrics.

(‘Materials’ pages 54-59)

Logo: Laser engraved, emboss/deboss metal logo and silkscreen (fabrics only)

Iniala double bottle

Material: *Body:* Wood,

Bag: Reinforced PVC.

Dimensions: 20x10x32cm

Logo: Silver silkscreen on PVC.

Personalization: Wooden body can be replaced with formica, PVC can also be any fabric (canvas, natural fibers,.etc)





Canvas (many colors available)



Silkscreen



Sarong



Hard case double bottle



Hardcase single bottle



Natural fiber single bottle

Newspaper

Daily messages and newspaper delivered in stylish bamboo tubes.

Bamboo newspaper

Material: *Body:* Bamboo

Strap: Leather

Dimensions: 7*x25cm

Logo: Can be laser engraved.



Ice Box / Bag

Insulated boxes & bags for room service and Ice cream presentation. Various shapes and dimensions can be lined with insualte.

(Please view boxes pages 20-27 & small bags 36-37 for reference)



Ice cream box

Dimensions: 10x10x12cm

Materials: PVC (wood, canvas, formica, fabric possible)

Logo: Can be laser engraved or attached as an emboss/deboss logo

Ice cream bag

Dimensions: 9x9x12cm

Materials: PVC (Canvas, fabrics, natural fibers also possible)

Logo: Can be laser engraved or attached as an emboss/deboss logo



Bags : Small

Accessories, toiletries, stationary, electronics and documents bags for In room, turn down gifts, front desk or the gift shop.

Style: Choose from various shapes and styles, combine with material and color of your choice.

Dimensions: Can be tailored to your specification. **Materials:** choose from various fabrics and cloths (*batik, canvas, natural fibers, PVC or leather*)

Logo: Your design or logo can be laser engraved onto textile, attached as an emboss/deboss metal logo or silkscreened onto the material of your choice.



Envelope bag



Electronics bag



Accessories pouch



Leather stationairy bag



Brown leather toiletry bag



Small clip batik toiletry bag



Floral pattern small hand bag



Electronics bag



Double section zip stationairy bag



Clutch bag, PVC and sarrong

Bags

Beach mesh

Material: *Body:* Black mesh

Strap: Exotica Sarong

(Fabric or batik possible)

Dimensions: *Body* 25x50x35cm

Personalization: Mesh and strap color of your choice. Emboss/deboss metal logo. Dimensions and interior compartments can be as specified.



Bags

Ocean Canvas

Material: *Body:* Canvas #24,
strap: Cotton

Dimensions: 20x40x30cm

Logo: White silkscreen

Personalization: Canvas color of your choice (or other material) silkscreen color and placement and dimensions can be tailored to your requirements.



Bags

Bags for guests to use during thier stay, for the gift shop or as a souvinier.

Style: choose from various shapes and styles, combine with material and color.

Dimensions: Can be tailored to your specification.

Materials: Choose from various fabrics (*batik, canvas, natural fibers or PVC*).

Logo: Your design or logo can be laser engraved onto textile, logo attatched as an emboss/deboss metal or silkscreened onto the material of your choice.

(‘Logo and Laser Engraving’ pages 52-53)

Reed Beach Bag

Material: *Body:* Natural fiber, *strap:* Leather PVC imitate

Dimensions: 30x50x25cm

Logo: Emboss metal logo

Traditional Thai hand woven bag adopted for island life. Interior sections and dimensions can be as specified.





Kipling two tone shell silkscreen



Black canvas classic leather strap



Beach canvas classic



Washed orange canvas w/ leather strap and pouch



Iniala kids backpack



Small bags series

In-Room : Slipper

Custom made slippers for In-room, spa or beach front use.

Style: *Single strap, thong, cross strap.*

Sizes: Choose from our three standard sizes **S, M** and **L.**

Materials: Choose a material for the *Insole* and the *strap*, choose from natural fibers, PVC, battic, sarrong or canvas.

Logo: Your logo or design can be laser engraved onto the insole or the strap.

Exotica In-room slippers are **durable** and can last many stays with little maintenance (*depending on insole material*). Provide your guests a **memorable** and **unique** treat to remember thier stay.





Single strap, natural fiber strap & insole



Single strap, black pvc strap with natural fiber insole



Cross strap, water hyacinth strap with natural fiber insole



Thong, black pvc padded strap with natural fiber insole



Single strap, batik strap with natural fiber insole



Cross strap, sarong strap with natural fiber insole

Housekeeping : Signage



Wet floor, DND, room numbers, facility and navigation signs

Materials: choose from wood, formica, canvas, fabric or natural fibers.

Shape & Size: Shapes and dimensions can be tailored to your specification.

Logo & Text: For *wood*, *formica*, *PVC*, graphics can be laser engraved.

For *textiles*, graphics can be silkscreened or printed.

Housekeeping : Door sign



Canvas two tone with silk screen



Painted wood, laser engraved



Raw wood, laser engraved



Raw wood, laser engraved

Housekeeping : Bin box



Dust bins for In Room and Hotel Facilities.

Materials: Choose from wood, formica, canvas, fabric or natural fibers.

Dimensions: Our standard size is 25 X 25 X 40 cm
Dimensions can also be tailored to your specification

Logo: Can be laser engraved (formica, wood, PVC). Silkscreen (fabrics only)

Shape: negative / positive camber (opposite page).



Canvas concealed, wooden lid



Natrual fiber concealed, formica lid



Formica stone DZ 8280J, flip lid system



Formica, negative camber, lidless

Housekeeping : Laundry box

House Keeping kit

Material: *Body:* Natural fiber,
Interior: White linen.

Dimensions: 50x30x30cm

Personalization: Materials,
dimensions, internal
compartments can be as
specified



House Keeping Kit II

Material: *Natural Reed.*

Dimensions: 30x30x50cm

Personalization: Interior Com-
partments can be design as
specified with two layers also
possible.

Weather resistant and easy to
clean. Various sizes available.

Housekeeping : Laundry bag



Laundry bags, any size, color, design you wish.

Materials: Choose from textiles *canvas, fabrics, PVC or batik/sarrong*

Dimensions: As required, non square dimensions also possible.

Logo: Silkscreened, embroidery or printed (multi color).

System: Top strap, cord fastener.



Others / Accessories



Aromatherapy set for the spa or bathroom



Leather key tags, batik



Ocean wash accessories tray



No smoking sign



Paper weight



Notes block container, natural fiber



Stationary box, natural fiber



Notes block, natural fiber

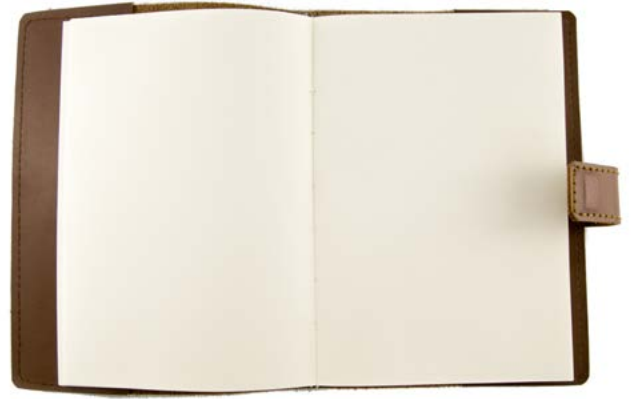


Notes block, container

Accessories and gift shop items. Bag tags, paper weights, note pads and notebooks, wedding gifts, card holders and more

All items can be tailored and personalized to your requirement.

Logo: Can be laser engraved or printed.
Material: Wood, glass, PVC, fabrics, formica.
(Materials pages 54-59 for reference)



Notebook as guest Premium gifts. paper standard, material and logo of your choice.



Wedding gift, solid wood, laser engraved



Beach Premium gift



Double system card holder



Earphone pouch



Chopstick blocks

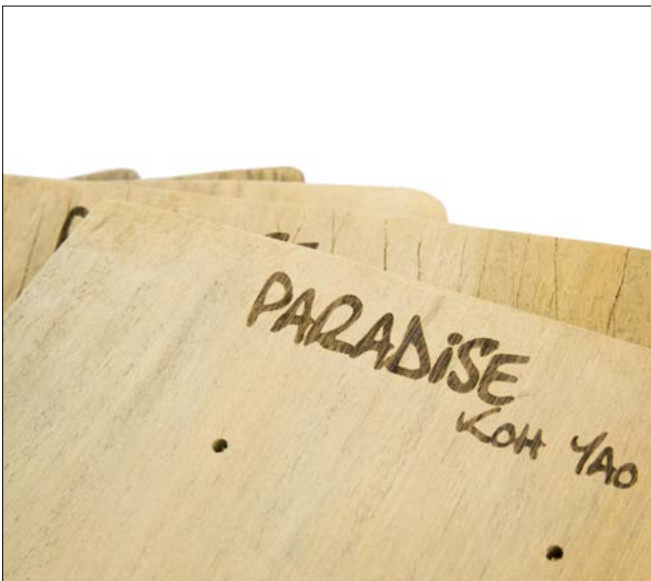
Materials : Laser engraving

Laser engraving is the process of using a focused laser to incederate or *cut away* at material's suface.

Materials: A broad array of materials can be laser engraved, these include: wood, formica, PVC, plastics and some textiles.

Detail: Very fine details can be rendered using this process, **coloring** is also possible for some materials.

Application: Engraving designs and logos, patterns can also be engraved onto materials surface.



Laser engravement on natural woods



Laser engravement on acrylic



Materials : Logo / Design

Personalize and brand your business. Choose from our logo options.

Emboss/Deboss metal logo: Bronze, copper, stainless steel or aluminum.

Silkscreen: Textiles, thick and prominent imprint.

Embroidery: (stitched logo or design) PVC and textiles.

Fabric print: (Full color and detail print, not suitable for washing) PVC and most fabrics



Emboss / Deboss metal logo



Laser and coloring



Embroidery



Silkscreen on canvas



Silkscreen on linen

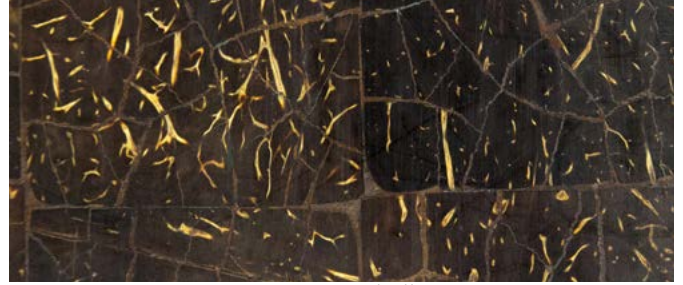
Materials : Woods

Woods

Various woods can be selected, choose from a large selection of woods



Pine



Coconut shell



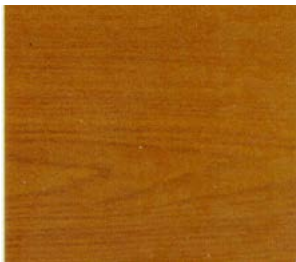
Persia



Plywood

Wood Stains

Coloring and dyes that can be applied to wood surfaces. Can provide a protective surface and resistance to water.



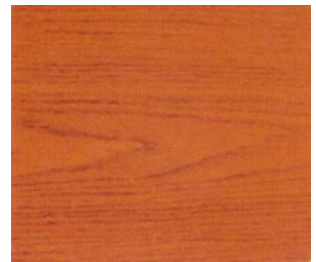
C CW 05



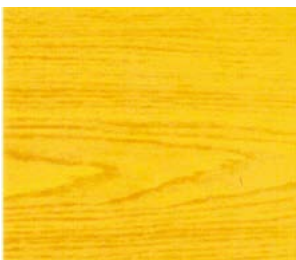
C CW 07



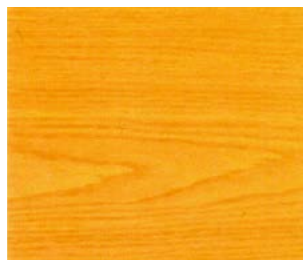
C CW 08



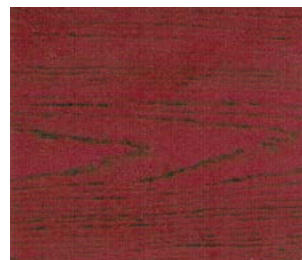
C S 2906



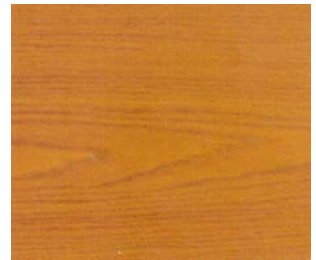
C CW 09



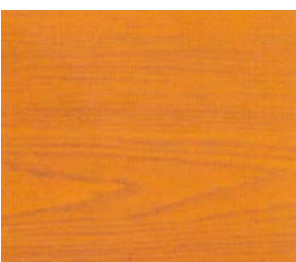
C CW 10



C CW 12



C S 2905



C S 2909



C CW 16



C S 2903



C S 2904

Materials : Formica Laminate

Formica are thin, high quality wood backed sheets that are laminated with metals or plastics imprinted with patterns. Formica is originally used for construction.

Logo: Your design and logo can be laser engraved.

Application: Used as a patterned surface on solid items i.e. boxes, bins, trays,.. etc

Properties: Water-resistant, mould resistant, durable with a high quality finish.



Metal EME 2766



Metal DMA 2866.



Metal DMB 2966.



Metal EMS 2722.



Metal IMG 0234



Graphic ERP
8004HG



Graphic DFA
7147SM



Graphic DFA
7149SM



Graphic EQ
5540FT



Graphic DA
2003R



Texture ELC
113LM



Texture ELB
8400LM



Pattern DF
8195R



Pattern DA
7180C



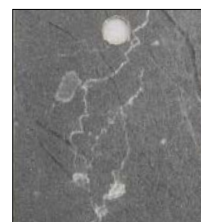
Pattern DPB
5671B



Pattern ELS
9381SL



Pattern EK
4719Q



Stone DLD 1572EL



Stone DS
3361LUN



Stone DS
3364LUN



Stone DZ
8280J



Stone DC
3342LUN



Wood DWN
2602SC



Wood DWN
2612SC



Wood DWT
9769EV



Wood DWT
9819EV



Wood EWY
3167EV



Wood EO 4819PG



Wood DL
8803TT.



Wood DWL
4517LX



Wood DWV
4512AE



Wood DWX
5504HT

Materials : PVC

PVC *Polyvinyl chloride textiles* are textiles lined with a plastic surface that come in an array of textures, patterns and colors. PVC is a very common industrial material, found on many products: Car interiors, airport/airplane seating, showroom interiors, bags and clothing

PVC is a cost effective alternative to leather.

Logo: Your desing and logo can be applied via silkscreen, laser engravement, fabric print or emboss/deboss metal logo.

Application: Can be the primary material for bags and as a covering for items with solid frame i.e. boxes, trays, dust bins.

Properties: Splash-resistant





SN 403 19-4



SN 403 19-3



SN 403 19-61



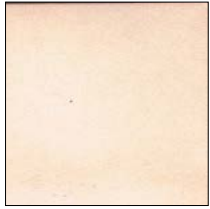
SN 403 19-5



SN 403 19-81



SN 403 21



SN 403 21-1



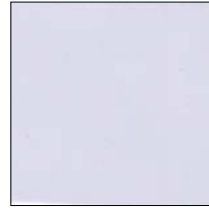
SN 403 21-93



SN 403 21-100



SN 403 22-74



SN 403 22-76



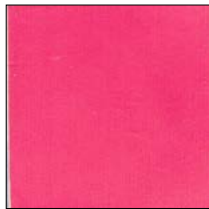
SN 403 24



SN 403 24-52



SN 403 25-74



SN 403 25-79



SN 403 27



SN 403 27-1



SN 403 27-2



SN 403 28-3



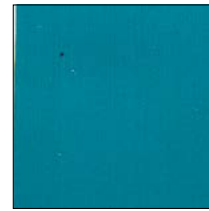
SN 403 28-4



SN 403 28-22



SN 403 28-101



SN 403 28-112



SN 403 29



SN 403 29-1



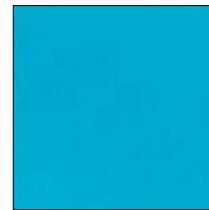
SN 403 29-91



SN 403 32



SN 403 32-66



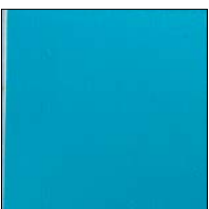
SN 403 32-109



SN 403 32-138



SN 403 32-147



SN 403 32-148



SN 403 33-64



SN 403 37



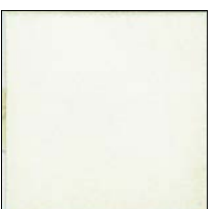
SN 403 37-61



SN 403 72-58



SN 403 85-90



SN 403 9

Materials : Canvas

Canvas is a durable woven fabric, available in many weights (thickness and threading size). Canvas is available in many colors and can also be waxed for waterproofing.

Logo: Your design and logo can be applied via silkscreen, laser engravement, fabric print, emboss/deboss metal logo.

Application: Can be the primary material for bags and as a wrapping for items with solid frames i.e. boxes, trays, dust bins.



Materials : Others

Natural fibers

Interwoven natural fibers, for the natural feel



Natural fiber #1



Natural fiber #2



Natural fiber #3



Natural fiber #4



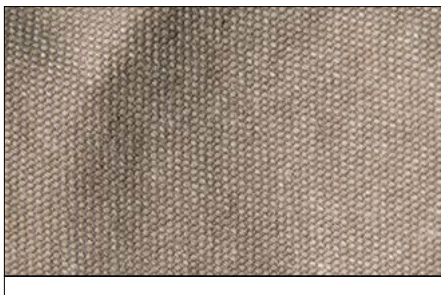
Natural fiber #5



Artificial reed

Fine Canvas

Tough fabric with a natural feel, available in many weights and colors.



Kipling fabric

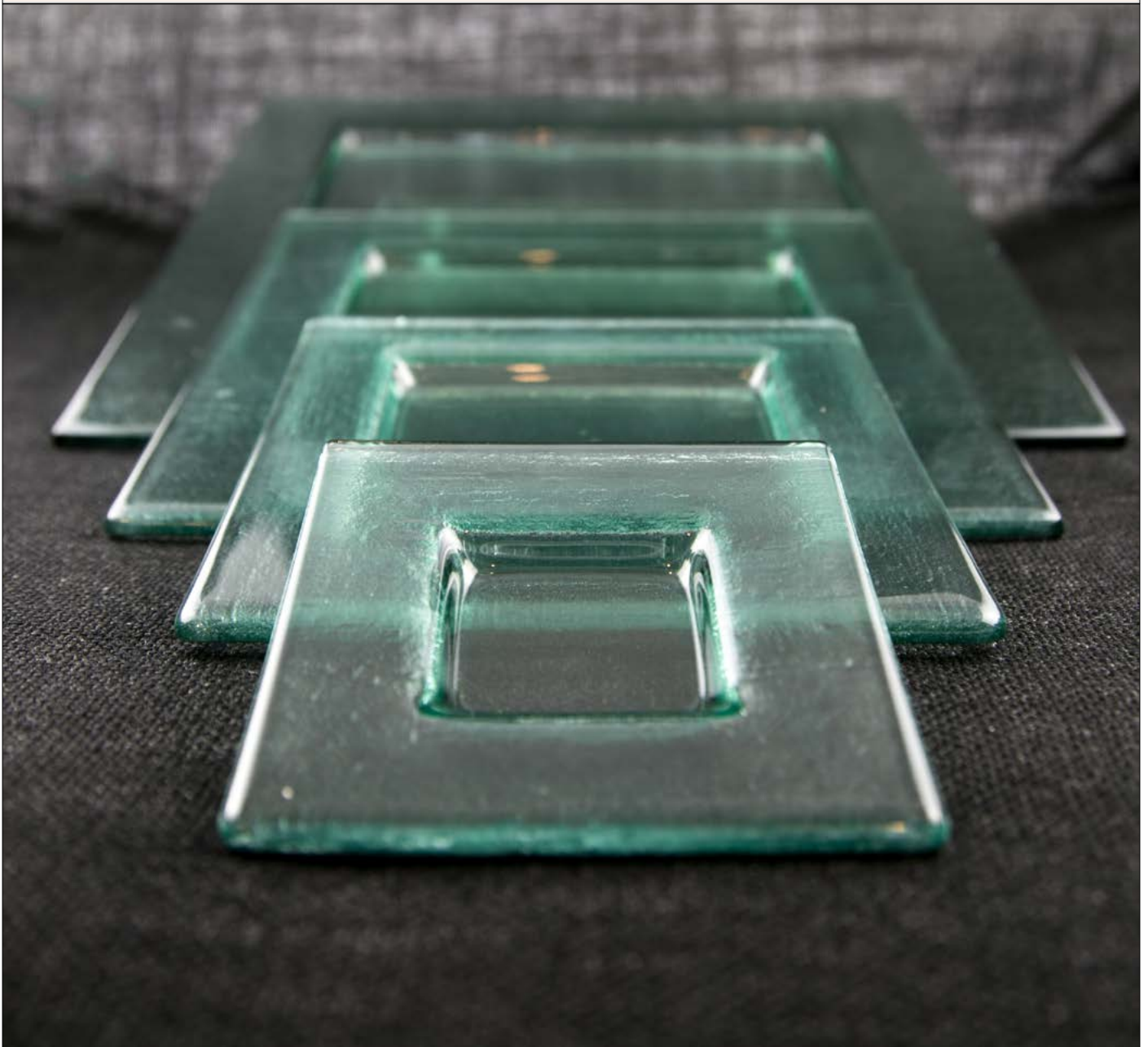
Fine, lightweight fabric perfect for beach environment. Available in many more colors



Warm Glass : Square series

Warm glass (also know as Kiln-formed glass) is glass formed in a Kiln.

Warm glass for the F&B department, for fruit presentations, interior, or decor. Locally produced in phuket your logo and design can be beautifully imprinted into surface.



Sqaure Series

Square plates for fruit presnetation, spa oils, F&B serving plates, front desk and In room.

Logo: Glass can be imprinted with your logo or design (*see page 'Coasters' for reference*)

Sizes *(thickness 6mm)*

XS: 12x12cm

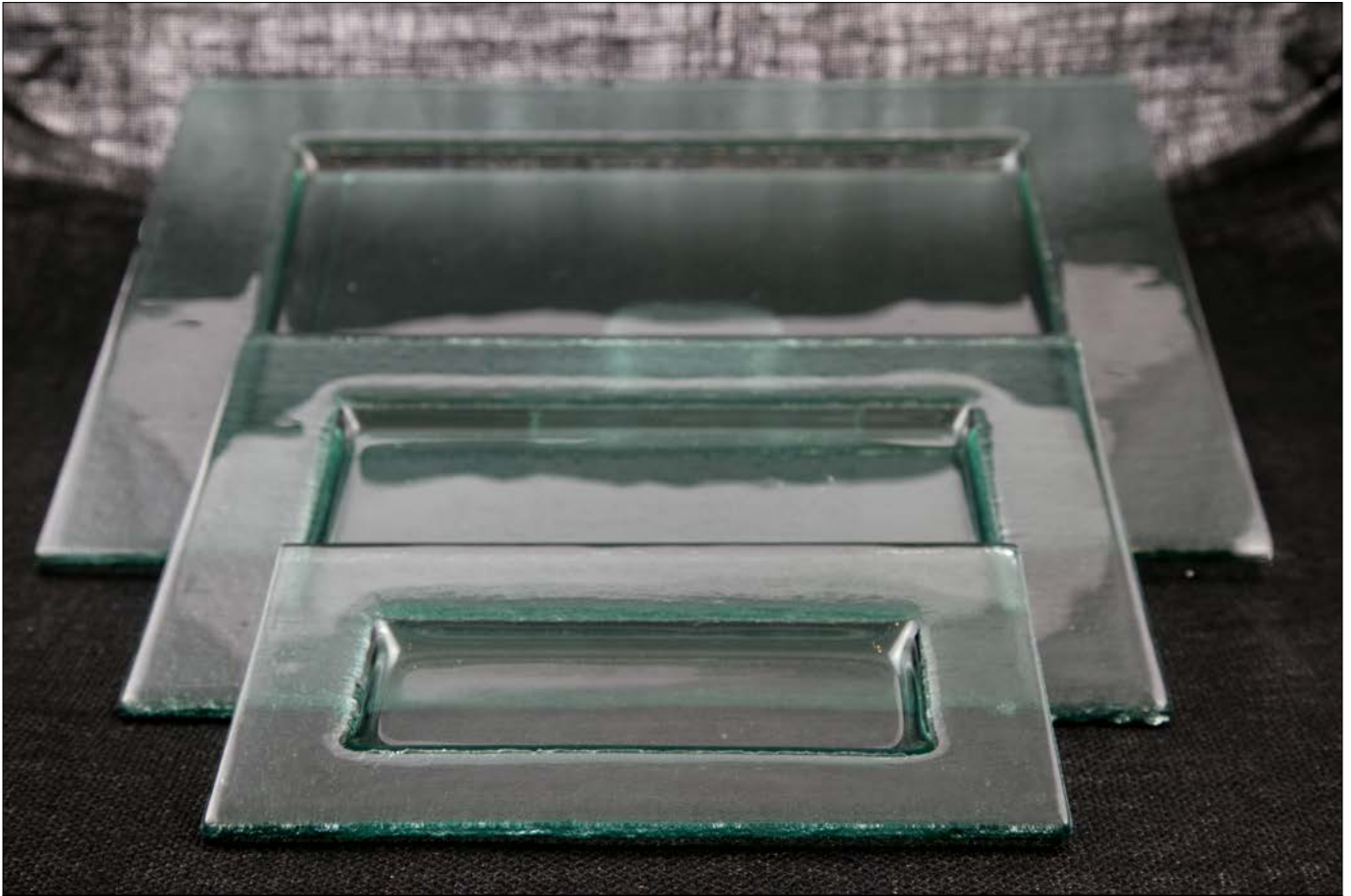
S: 18x18cm

M: 26x26cm

L: 36x36cm

Or any custom size and thickness

Warm Glass : Rectangle series



Rectangle Series

Rectangle plates for fruit presentation, spa oils, F&B serving plates, front desk and In room.

Glass can be imprinted with your logo or design (*see page 'Warm Glass: Coasters' for reference*)

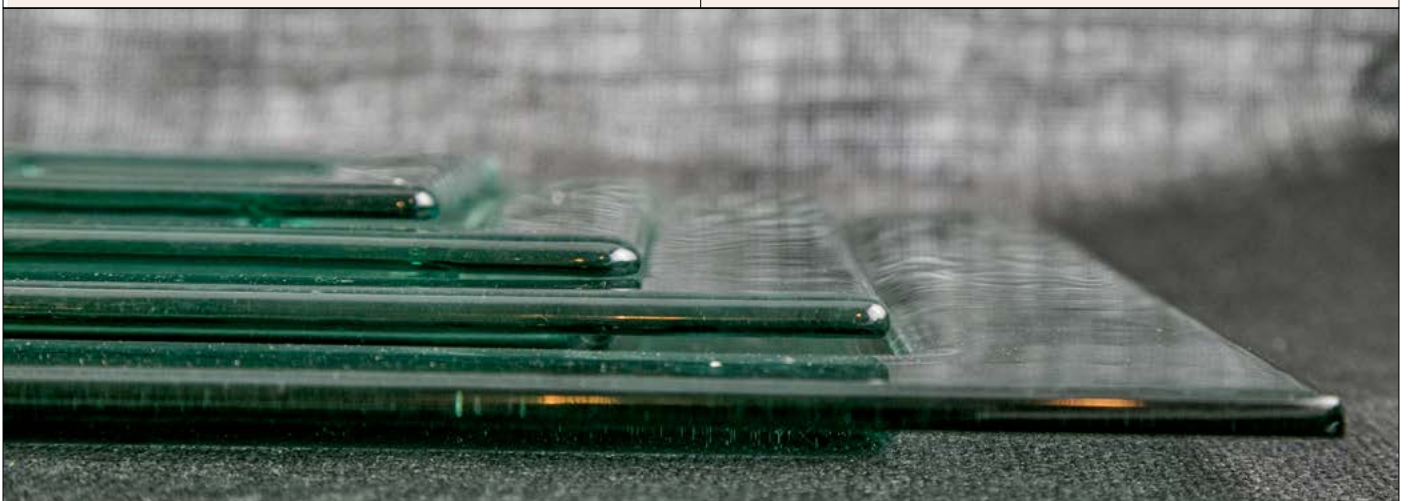
Sizes (*thickness 6mm*)

S: 12x20cm

M: 20x30cm

L: 30x40cm

or any custom size and thickness



Warm Glass : Sushi series



Sushi series

Sushi and sashimi serving trays for the Japanese cuisine.

Sizes

S: 15x10cm

M: 21x12cm

L: 30x15cm

Dimensions: Custom sizes can be tailored

Logo: Your logo or design can be imprinted on glass surface
(see 'Warm Glass: Logo')

Warm Glass : Coasters

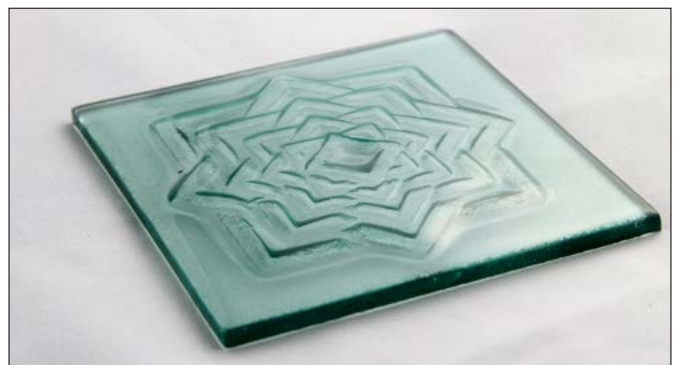
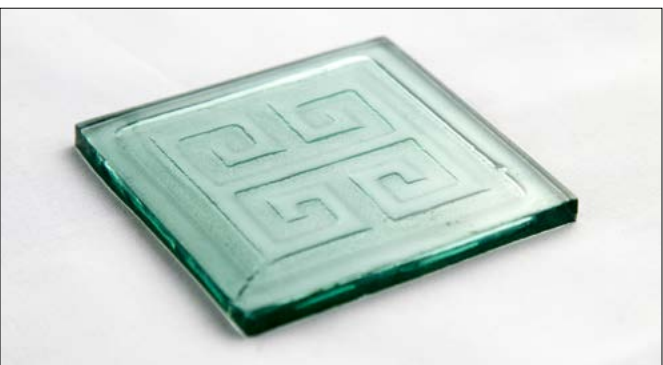
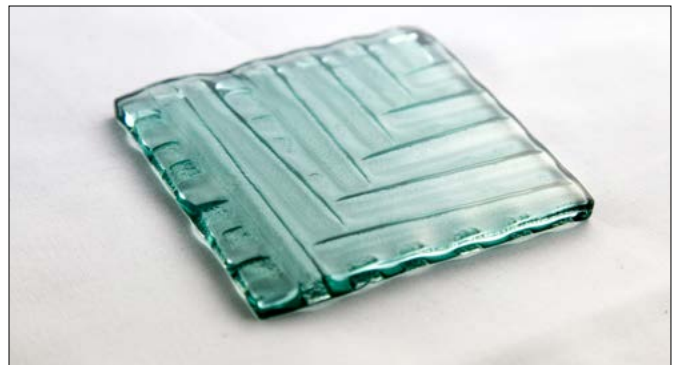


Coasters

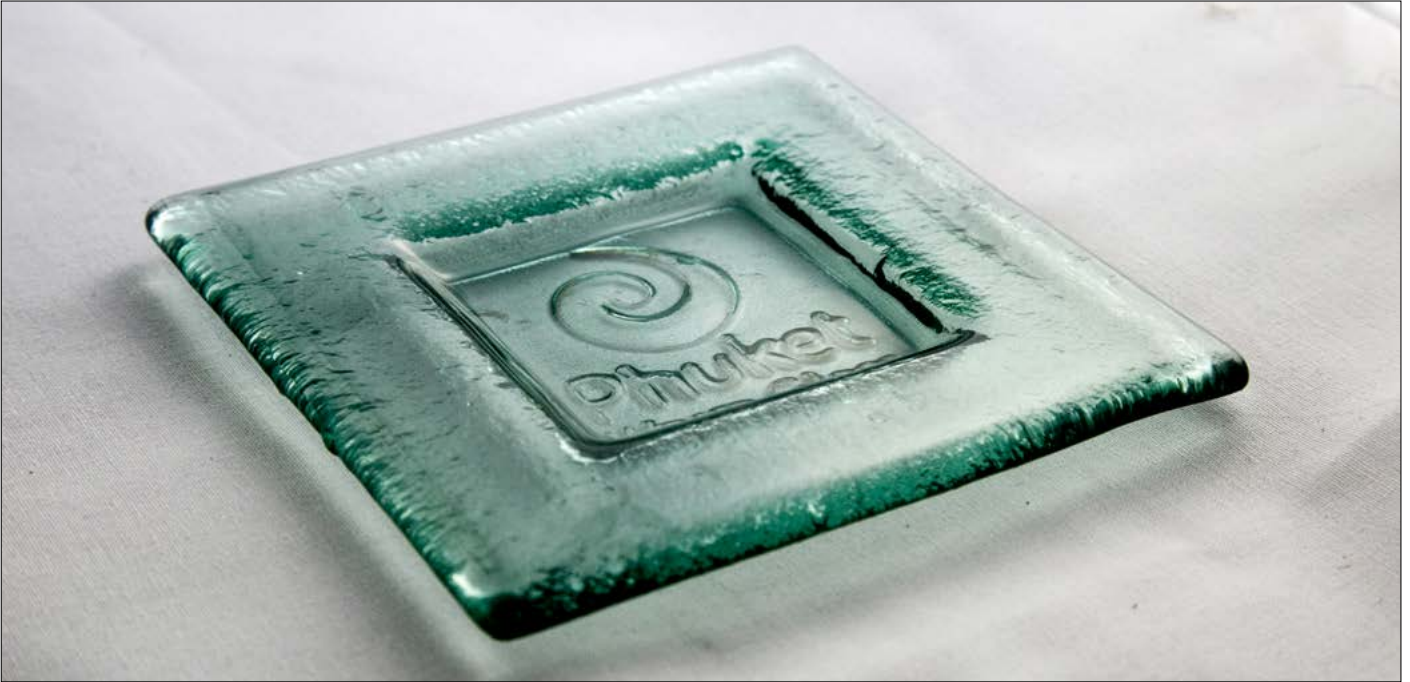
Custom coasters with your logo or design for In room use or for the restaurant.

Designs are laser cut and thus very precise.

Same technique **can be applied to plates, trays, hotel signage** and much more.

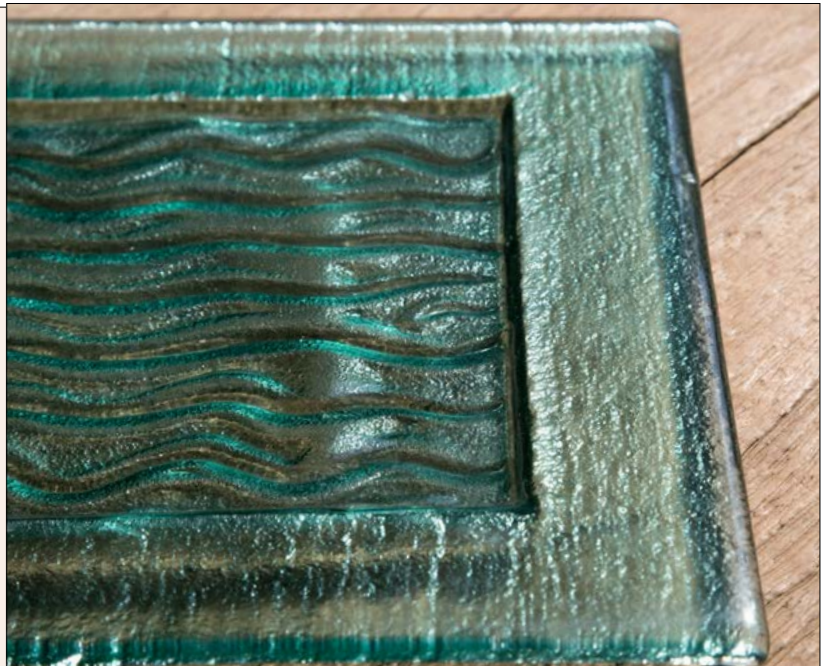


Warm Glass : Logo



Your **design, pattern** or **logo** can be physically **imprinted** into surface of the glass. Designs and logos are **laser cut** and thus extremely precise.

A **natural feel** can be achieved using **sand based moulds**. Patterns can be drawn or printed into the sand and transferred to glass (*see example to right*)



Warm Glass : Others



Salad step bowl: fruit display, buffet serving plate, decor.



Bento box: Design your own (size, layout, color)

Ceramics of Phuket



Ceramics of Phuket is a local Partner. Ceramics hand made and produced locally in Phuket can be tailor made to your specification and design. In-room decoration, Spa oils, Dinner Plates and Ashtrays, Decor and Fittings.

Ceramics of Phuket : Burners



Burners for the Restaurant, Spa or for In-room use, choose from the many available styles and customize it with your logo or design.



Ceramics of Phuket : Dispensers



Ceramic Dispensers.
For Spa, In-room or public restroom.
Shape and size: Choose from the selection or have custom designs tailored.
Color and glazing: Can be of your choice (*see Ceramics of Phuket : Finishes and logo*)
Logo and text: Choose from the various designs. (*see 'Ceramics of Phuket : Finishes and Logo' for reference*)



Text and Texture



Glaze and Coloring



Various Shapes and Sizes possible



Spa, In Room, Toiletttes

Ceramics of Phuket : Spa Oils



Spa Oil Presentation. Finishing glazes coloring of your choice with shape size and design of your specification.



Ceramics of Phuket : Ash Trays



Ash Trays. For In room, Common areas, Restaurants and Bars. Custom design with your Logo, Finishing and Design can be tailored as specified.



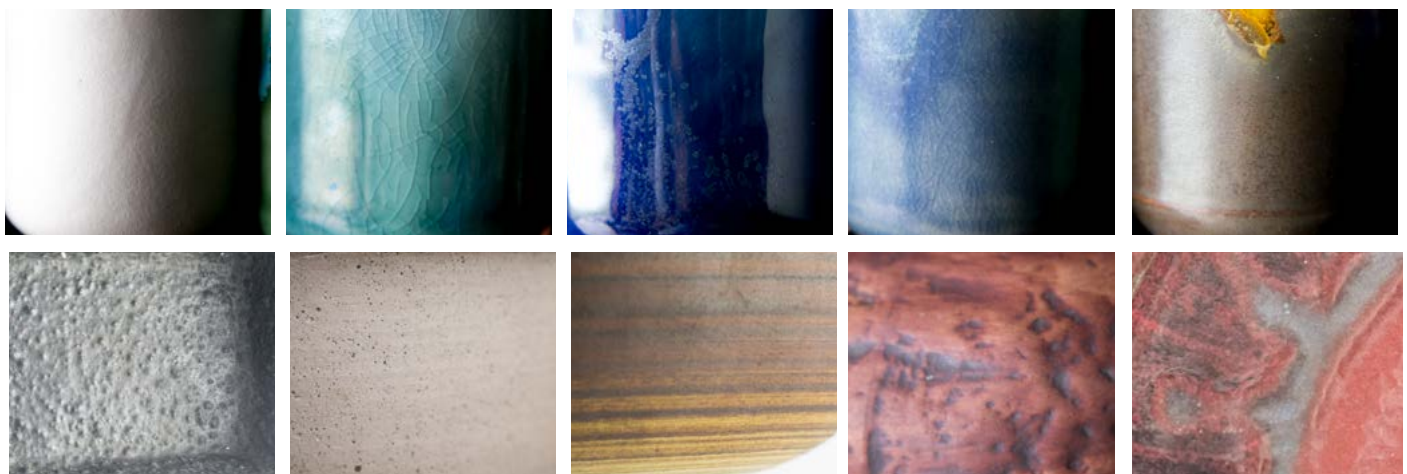
Ceramics of Phuket : Finishes & Logo



Samples finishes: Glazes and Textures.



Logo and Design; Your logo and design can be presented in various forms



More sample finishes

Phuket Soap

Phuket soap is a sister company of Exotica crafts produced locally in phuket we produce many hotel amenities with tailored scents and packaging.

In Room

Natural bar soap, *scents and nutrition*
Shower gels, *scent of your choice*
Shampoos, *scent of your choice*
Conditioners, *scent of your choice*
Body lotions, *scent of your choice*

Spa

Massage oils, *scent of your choice*
Burners, *scent of your choice*
Diffusers, *scent of your choice*
Mosquito repellent *(before and after)*
After sun lotion, *aloe vera gel*
Hand cream, *scent of your choice*
Herbal balm, *color/scent of your choice*



Phuket Soap : Natural Bar



Our bar soaps are produced using **natural ingredients**, nutritious extracts and natural essential oils. Packaging of your choice possible, your logo can also be imprinted onto soap body.



Coffee



Aloe Vera



Mangosteen



Charcoal



Tanaka



Honey Oats



Seaweed



Rice berry



Tumeric

Phuket Soap : Products



Massage Oil

Can be packaged in dispenser or bottle of your choice with your label. Selection of scents



Mosquito

(Before & After)

Efficient roller ball dispenser system
Can be packaged in dispenser or bottle of your choice with your label. Selection of scents



Herbal Balm

Can be packaged in dispenser or bottle of your choice with your label. Selection of scents



Soy Candle

Can be packaged in dispenser or bottle of your choice with your label. Selection of scents



Hand Cream

Can be packaged in dispenser or bottle of your choice with your label. Selection of scents



After Sun Gel

Made from Aloe vera extract
Can be packaged in dispenser or bottle of your choice with your label. Selection of scents



Shampoo

Scent of your choice
Price per kg:



Body Lotion

Scent of your choice
Price per kg:



Conditioner

Scent of your choice
Price per kg:



Natural Foot Soak

Scent of your choice
Price per kg:



Shower Gel

Scent of your choice
Price per kg:



Towel Cologne

Scent of your choice
Price per kg:

Phuket Soap : Dispensers Cover



Dispensers. Easily refillable and splash proof. For In-room, Spa or for public restrooms.

Material: Wood, Formica and Waterproof fabrics. (*see page Materials: Formica*)

Dimensions: Depending on dispenser size (we can make dispenser covers for your existing bottles)

Logo and Text: Your Logo or text ('Shampoo') can be laser engraved.

Bottles (*see following page*)

We can produce amenity liquids of your scent and choice as well as provide bottling of your choice (much greater variety at showroom).

Phuket Soap : Bottles



Salts and Creams



Glass containers with Cork or Wood lids



Essential Oils and Droppers



Cream and Lotions



Dispensers and Sprays

Terms



High Quaility, flexible and fast

We hope this catalogue has served to provide ideas and inspiration for your business.

Please contact us for further detail regarding possibilities.

Visit our Showroom, its a **must see!**
(Terms not applied for Cermics of Phuket)

Sample: No cost

Minimum order: N.a.

Delivery: 15 - 30 days

Payment: 50% deposit on purchase order date, remaining 50% on delivery date.

Thank you for your interest, we look forward to your business.

Sincerely yours.

Exotica Crafts



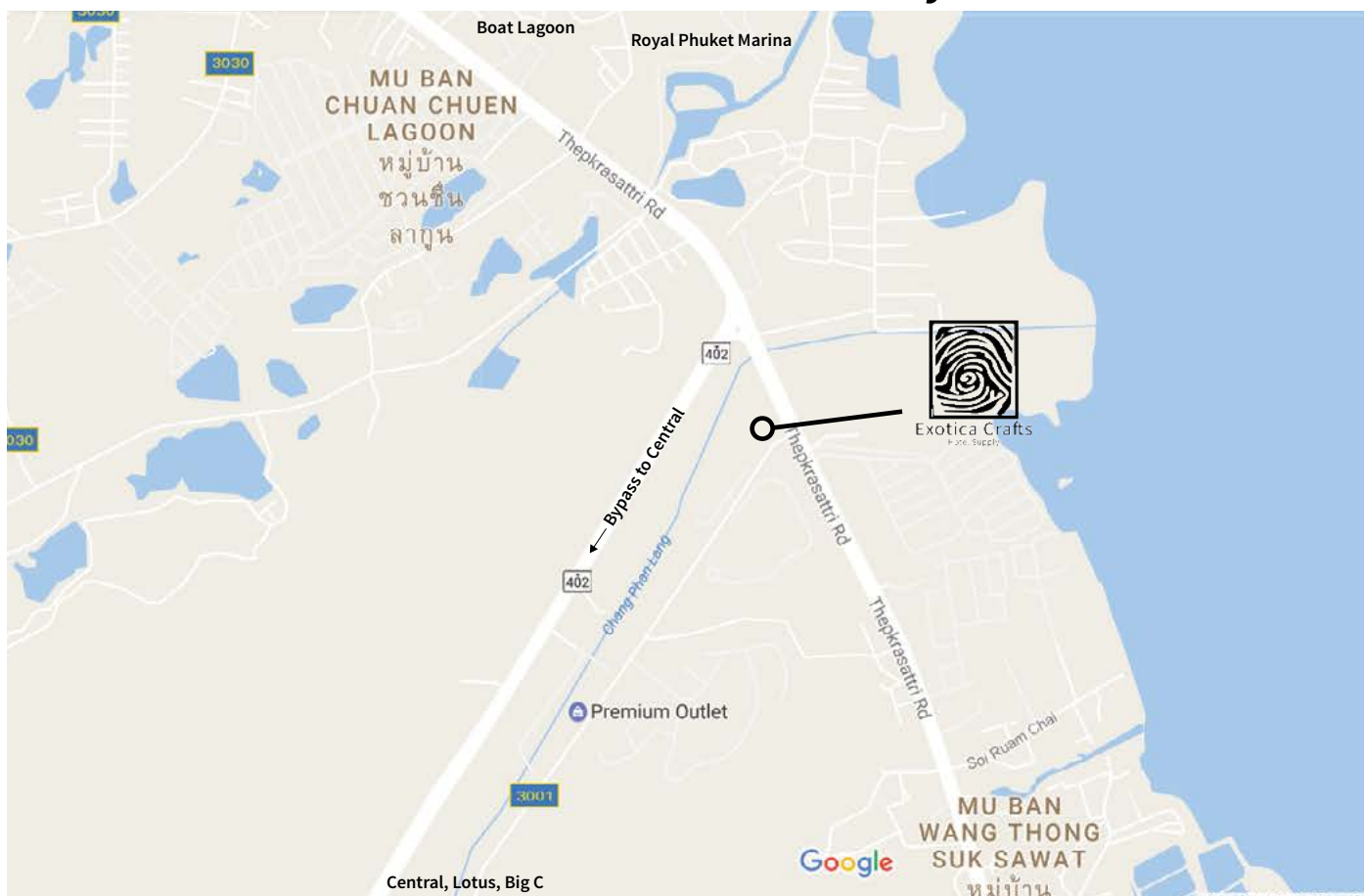
Use your own labelling



Combine services (Exotica Bag and Phuket soap)

Contact

Showroom and Factory



12/39, Moo 2, Thepkasatri Rd, T. Koh keaw, A. Muang, 83000 Phuket, Thailand

Contact us



Email

info@exoticacraftsphuket.com



Phone

Tel: 076 528 811
Mob: 081 828 282



Line

@exoticacrafts

Website & Newsletter

Stay up to date with new Products, Materials and Services. Sign up below
www.exoticacraftsphuket.com/newsletter

Follow us



@exotcrafts



@exoticacraftsphuket